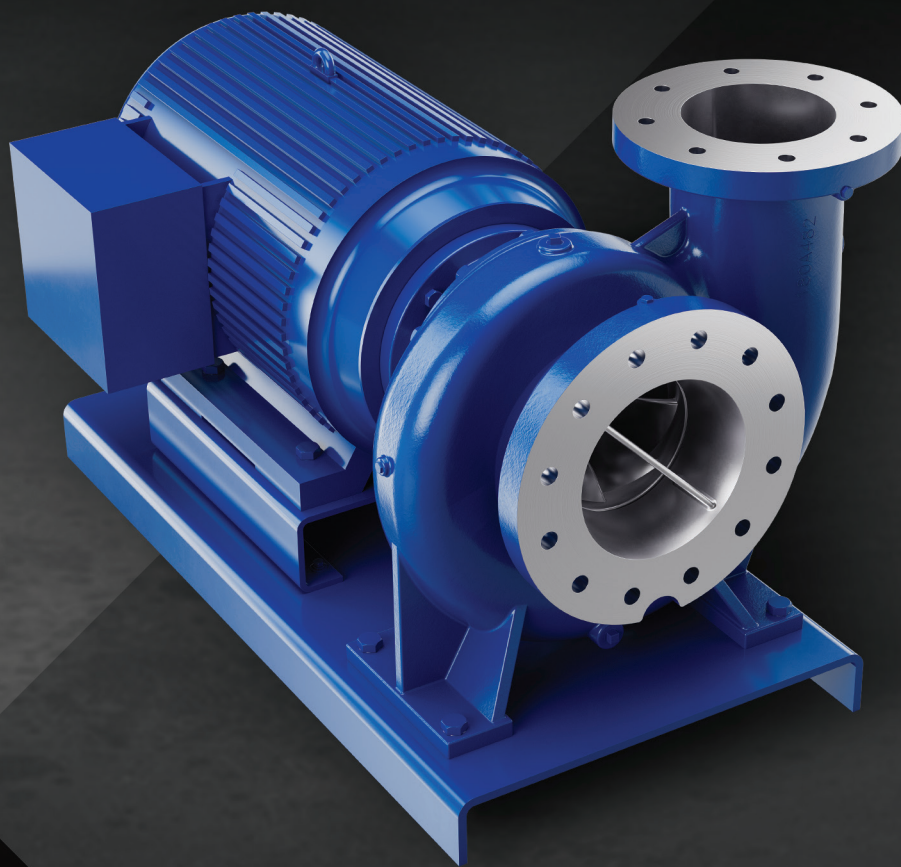




# COMMERCIAL HVAC AND WATER SUPPLY SOLUTIONS

---



## **3800 SERIES**

Single Stage End Suction Pumps

## **382B SERIES**

Single Stage Vertical In-Line Pumps

## **400 SERIES**

Split Case Pumps

## **PVM SERIES**

Vertical Multi-Stage Pumps

## DURABLE PUMPS FROM A LASTING BRAND

---

Backed by over a century of innovation, Pentair Aurora® pumps deliver efficient, reliable performance in commercial HVAC and water boosting applications. Aurora pumps are designed to check all your boxes, from compact builds that can fit in tight spaces, to durable components that hold up in high-demand environments.

[pentair.com/aurora](https://pentair.com/aurora)

## 3800 SERIES Single Stage End Suction Pumps



3804

- NSF372 certified, with options for NSF50 or NSF61
- Broad range of hydraulic coverage
- Efficient, durable design elements for more reliability
- Split-coupled and close-coupled configurations

Max Flow  
**4,200 gpm**  
(954 m<sup>3</sup>/hr)

Max Head  
**520 ft**  
(158 m)

Max Temp  
**275° F**  
(135° C)

## 382B SERIES Single Stage Vertical In-Line Pumps



382B  
Split-Coupled

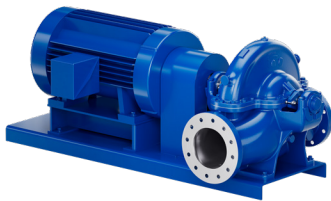
- NSF372 certified
- Patented jacking mechanism on split-coupled models leads to easy maintenance and service
- Minimal hydraulic noise that meets or exceeds Hydraulic Institute® standards
- Built to last with durable components

Max Flow  
**12,000 gpm**  
(2,725 m<sup>3</sup>/hr)

Max Head  
**370 ft**  
(112 m)

Max Temp  
**275° F**  
(135° C)

## 400 SERIES Split Case Pumps



410

- NSF372 certified, with options for NSF50 or NSF61\*
- High-efficiency performance
- Easy installation + serviceability
- Durable components for unyielding longevity

\*410 Series only

Max Flow  
**15,000 gpm**  
(3,407 m<sup>3</sup>/hr)

Max Head  
**663 ft**  
(202 m)

Max Temp  
**275° F**  
(135° C)

## PVM SERIES Vertical Multistage Pumps



PVM

- NSF61/372 certified (PVMX1-90 only)
- Broad range of hydraulic coverage
- Flange-to-flange dimensions are compatible with many competitor pumps of this type
- Meets U.S. Department of Energy PEI standards

Max Flow  
**550 gpm**  
(124.9 m<sup>3</sup>/hr)

Max Head  
**700 ft**  
(213 m)

Max Temp  
**248° F**  
(120° C)

### LIFECYCLE SUPPORT FOR YOUR PUMP

When it's time to service your pump equipment with replacement parts, there's no room to gamble on unknown suppliers. We carry thousands of genuine OEM parts tailored to Pentair pumps, ready to ship quickly.

### HYDRONIC ACCESSORIES

Get the most out of your system with a wide range of hydronic accessories that can help boost performance and reliability.

Learn more at [pentair.com/pumpcare](https://pentair.com/pumpcare)

800 Airport Road | North Aurora, IL, 60542 | Ph: 630.859.7000 | [pentair.com/aurora](https://pentair.com/aurora)

Hydraulic Institute is a registered trademark of Hydraulic Institute, Inc.

All indicated Pentair trademarks and logos are property of Pentair. Third party registered and unregistered trademarks and logos are the property of their respective owners.

© 2025 Pentair. All Rights Reserved.

AU24198 (05-16-25)