

Grundfos SL Range

# No compromise

Unmatched reliability and efficiency



**GRUNDFOS** 

Possibility in every drop



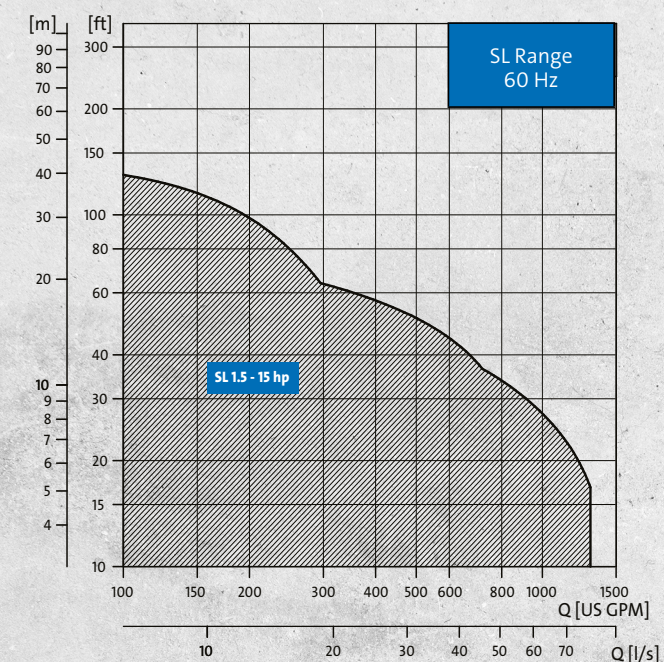


# Unmatched reliability and highest total efficiency

The SL range of wastewater pumps combines operational reliability with high total efficiency and offers you the lowest cost of ownership:

- The optimized **S-TUBE®** hydraulic design offers higher operational reliability, with improved non-clogging abilities
- Energy-efficient performance and large spherical passage remain uncompromised with the refined **MK2 hydraulic design**
- Still with the highest wire-to-water efficiency currently available, with no compromise between high hydraulic efficiency and large spherical free passage

## Highest efficiency over a wider range



Performance range of the SL pump program

For more product information please visit [grundfos.us](https://grundfos.us)

## Designed with state-of-the-art hydraulics

When we designed new hydraulics specifically for pumping wastewater, we looked at the technologies available on the market and decided that we had to keep things simple. We were not just chasing the highest efficiency at a specific duty point. Wastewater pumps always run with varying loads, and we wanted our new hydraulics to have extremely high efficiency over a wider range of the curve, without compromising free passage and reliability.

The S-TUBE® impeller developed by Grundfos includes a tube-shaped impeller and a pump housing around it that matches the tube shape through the entire pump. This hydraulic solution contributes to make the SL ranges the most innovative, efficient and robust wastewater pumps available today.

The S-TUBE® impeller is wet-balanced. This lowers the vibration level dramatically.

## Highest efficiency and outstanding reliability

When you experience the S-TUBE®, you get the highest efficiency over a wider performance range and the largest free passage. We have created an impeller that is quite simply the best at fulfilling the core function for which a wastewater impeller is designed: providing the user with robust, efficient and trouble-free operation, and outstanding reliability.

## The best total wire-to-water efficiency

Although the pump system may not be the largest single investment in the wastewater installation, over the installation's lifetime, it is the component in the system that is the key element to ensuring the long-term cost effectiveness of the wastewater installation. Therefore, it is important that we and our customers have a common understanding when we talk efficiencies.

When we say total efficiency, we mean the total, wire-to-water efficiency. In a wastewater pump there will be electrical, mechanical and hydraulic losses. A pump manufacturer needs to master these without compromising reliability. At Grundfos, we do precisely this and can therefore supply high-efficiency products. We have listened to and understood your concerns with the costs incurred for inefficient operation, maintenance and downtime.

All SL wastewater pumps are built with high-efficiency motors using IEC, IE3 and NEMA premium efficiency motor components, and to this we add the innovative and elegant S-TUBE® impeller and intelligent controls. What you get are wastewater pumping solutions with the best performance and highest level of reliability currently available.



# Designed for the most demanding applications and tested to the highest standards

The key to optimizing performance in your system is to minimize known risk factors and reduce maintenance requirements. The SL range for submerged installation is available from 1.5-15 hp.

These pumps can handle municipal, industrial and domestic wastewater, drainage and surface water, and process water.

They are designed for water and wastewater transportation from water utility, industrial and commercial applications, and are ideal for network pumping stations and wastewater treatment plants.

The SL range of wastewater pumps can be installed using an auto-coupling guide-rail system or with a fixed pipe connection, and are also for freestanding installation as transportable utility pumps.

## Perfect for your refurbishment project

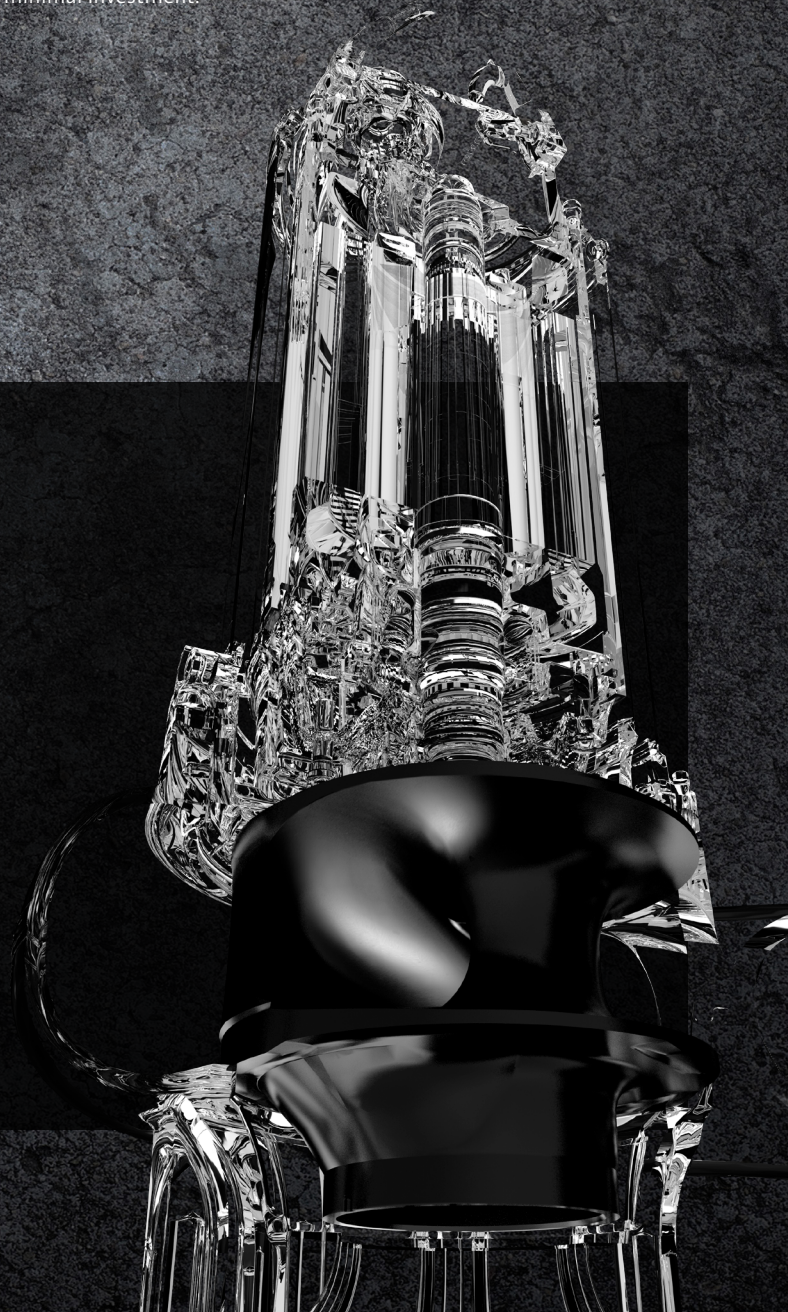
These products leave a small footprint on your existing installation. By this, we mean that you can replace your wastewater pumps with new SL pumps without having to change your system or sump. The benefits of high-efficiency pump operation are immediately available to you with minimal investment.

## Intelligent pumping solutions

At the heart of Grundfos iSOLUTIONS is our dedicated wastewater controller for larger wastewater pumps that works with motor protection unit or variable frequency drives. For local networks, SL wastewater pumps and iSOLUTIONS can be configured and scaled precisely to match your requirements.

## Motor efficiency

Grundfos ensures the highest standards of motor efficiencies and substantial energy and cost savings by applying the best-in-class designs. SL pumps are fitted with motors built using high-efficiency IEC, IE3 and NEMA premium motor components.



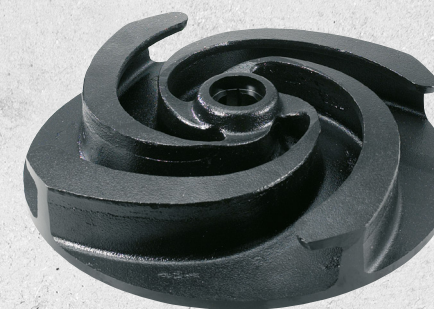
## Choice of impeller

The S-TUBE® impeller ensures no compromise between the highest efficiency over a wider performance range, and the largest free passage. Greater free passage means better solids handling and greater non-clogging abilities. All S-TUBE® impellers are wet-balanced to obtain a low vibration level. With the introduction of the two-channel S-TUBE® design for larger capacities, the vibration level is further reduced.

The S-TUBE® impeller is a 'vaneless' closed channel-impeller design without leading edges that prevents clogging in the impeller. A threaded sealing system offers effective and robust sealing between the impeller and volute.

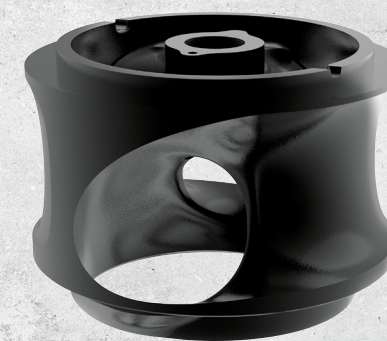
## Large spherical passage - SL pumps fitted with S-TUBE® Mk2 hydraulic design

Heavy-duty cast iron, one-channel closed S-TUBE® Mk2 impeller design with 2", 3" or 4" free spherical passage optimizes hydraulic efficiency and reduces energy costs.



## Higher dry solids content – SL pumps fitted with SuperVortex

For applications with intermittent operation and where dry solids content is over 3 %, the SuperVortex impeller with spherical free passage up to 4 inches is ideal.



## Industry-leading product development

At Grundfos, we have decades of experience using simulations and testing to optimize pump reliability and efficiency, while ensuring a quality product design that matches the customer's application requirements. Extensive field testing is carried out before a new product range is released to the market.

By combining test-driven and simulation-driven development, we have increased our capacity to build engineered-to-order products, tailored to specific customer requirements.





# Grundfos smart design provides reliability and efficiency for your wastewater pumping system

At Grundfos, we have extensive experience adapting and improving the durability, efficiency and operational reliability of our wastewater pumps. For 75 years, we have been applying pump design, testing and technology to meet the requirements of the entire water cycle.

That is why Grundfos is uniquely positioned to build a broadly applicable wastewater pump and stay one step ahead of the constantly changing demands of wastewater today.



## Double mechanical shaft seal

Primary and secondary seal in one cartridge unit providing longer seal lifetime and easy fail-proof replacement – even in the field. Replacement can be done without special tools.

## Short rotor shaft

Compact motor construction reduces vibrations to protect shaft seals and bearings, ensuring a longer operational lifetime with less maintenance.

## Easy-to-remove cable entry

The innovative and patented stainless steel cable entry ensures that liquid cannot penetrate through the cable inlet into the motor and is easy to dismantle in case of service.

## One cable to the pump

With just one cable to connect sensors and power supply, an important at-risk area is removed, simplifying pump installation, commissioning and maintenance.

## Easy-to-open clamp

The stainless steel clamp assembly system requires no tools for the quick and easy disassembly of pump from motor unit, and offers easy access for pump maintenance.

## Patented SmartSeal

The patented Grundfos SmartSeal auto-coupling gasket provides a completely leak-proof connection between the pump and the base unit of the auto-coupling system.

## Lifting handle

The lifting handle is designed for optimum point-of-balance, ensuring correct lifting and protecting the auto-coupling sealing.

## Smooth, easy-to-clean surface

The extremely robust impact-resistant surface is smooth and easily cleaned.

## Hydraulic design

Hydraulics have been upgraded with improved fiber handling, enhanced wear resistance on the sealing system and energy-efficient performance.





## We are in the water business with you

As a pioneer and global leader in water pump technology, Grundfos creates intelligent, sustainable solutions to help solve the world's water and climate challenges. Through our heritage, we have the experience and innovative capabilities to help our partners, customers and communities move water in an increasingly energy and water efficient manner. We see this as not only a great business opportunity, but as an obligation to ensure the world heads toward a more sustainable tomorrow. Our complete portfolio of pumps and solutions are designed for commercial, residential, groundwater, municipal and industrial applications with emphasis in trendsetting, energy efficient technologies such as permanent magnet motors and advanced pump controls and monitoring. Because water matters, and so does your business.

To learn more, visit [grundfos.us](https://grundfos.us) or follow us on Facebook and LinkedIn.

Visit [grundfos.us/pei](https://grundfos.us/pei) to learn more about Department of Energy (DOE) pump energy index (PEI) requirements and PEI ratings on specific Grundfos models.