

### Submersible Dewatering Pumps

<b>DISCHARGE CASE</b> .....	356T6 Aluminum, Hard Anodized
<b>DIFFUSER</b> .....	356T6 Aluminum, Hard Anodized
<b>SUCTION CASE</b> .....	356T6 Aluminum, Hard Anodized, with wear resistant polyurethane liner
<b>FRAME &amp; OUTER CASE</b> .....	6063T6 Aluminum, Hard Anodized
<b>WEAR PLATE</b> .....	Polyurethane
<b>PUMP SHAFT</b> .....	Stainless Steel
<b>IMPELLER</b> .....	Hardened 17-4 Stainless Steel
<b>HARDWARE</b> .....	Stainless Steel
<b>O-RINGS</b> .....	Buna-N
<b>SEAL</b> .....	Design ..... Tandem mechanical, Oil lubricated
<b>INBOARD</b> .....	Material ..... Rotating Face - Carbon Stationary Face - Ceramic Elastomer - Buna-N Hardware - 300 Series Stainless
<b>OUTBOARD</b> .....	Material ..... Rotating Face - Silicon Carbide Stationary Face - Silicon Carbide Elastomer - Viton® Hardware - 300 Series Stainless
<b>STRAINER</b> .....	300 series stainless steel, .25" (6.35mm) Holes
<b>UPPER BEARING:</b>	
Design .....	Single Row, Shielded, Ball
Lubrication.....	Prelubricated high-temperature grease
Load .....	Radial
<b>LOWER BEARING:</b>	
Design .....	Single Row, Shielded, Ball
Lubrication.....	Prelubricated high-temperature grease
Load .....	Radial & Thrust
<b>CORD ENTRY</b> .....	50Ft. (15m) with Strain Relief and Pressure Grommet for Sealing
<b>MOTOR:</b> .....	Design ..... NEMA Design B - Three Phase, Squirrel Cage Induction
Insulation.....	Class F
<b>CONTROL:</b> .....	Three Phase..... Rainproof NEMA 3R. Provides with Circuit Breaker for overload and short circuit protection
<b>OPTIONAL EQUIPMENT</b> .....	Watertight, NEMA 4 Control. Discharge Adapters kits, Carrying Handle, Sludge Strainer, Viton® Seals, and Lift Cord. See accessory section for additional information.

50HZ DATA AVAILABLE UPON REQUEST

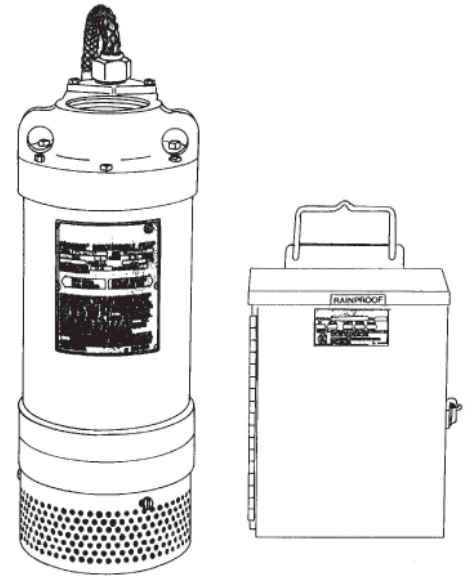
**WARRANTY INVALID IF CORRECT PROSSER CONTROL IS NOT USED AT ALL TIMES.**

#### WEIGHT

Pump Only - 73 lbs./ 33 kg.  
Control - 12 lbs./ 5.4 kg.  
Cord - .27 lbs/Ft / .40kg/m

#### SHIPPING WT./STD. UNIT

Pump, Cord & Control  
Domestic - 102 lbs. / 46 kg  
Export - 139 lbs. / 4.5 Cu. Ft.



### Series: 9-55000, 5.0HP, 3Ph 2 Stage

#### DESCRIPTION:

Prosser's small but powerful Portable Electric Submersible Pumps are compact, lightweight units. They are quiet and will operate in any position. No priming, suction hose or foot valves are required. Prosser pumps can be easily staged for higher head applications. The patented outboard shaft seal on this pump is a specially designed silicon carbide abrasive resistant type "S" shaft seal, which offers greater service life. A special abrasion resistant suction case lining and wear plate is a standard feature that protects the pump against wear from abrasive laden water.

The unique in-line design assures a cool running motor with heat transferred to the pumped liquid. Prosser pumps can operate continuously in 104°F (40°C) temperature water and within a range of 5 to 9PH.

Before pumping fluids other than water consult the factory, giving fluid, fluid temperature, specific gravity, viscosity, capacity in USGPM and total head and/or pressure requirements, including friction loss through discharge line, fittings, valves, etc.



#### WARNING:

CANCER AND REPRODUCTIVE HARM -  
WWW.P65WARNINGS.CA.GOV

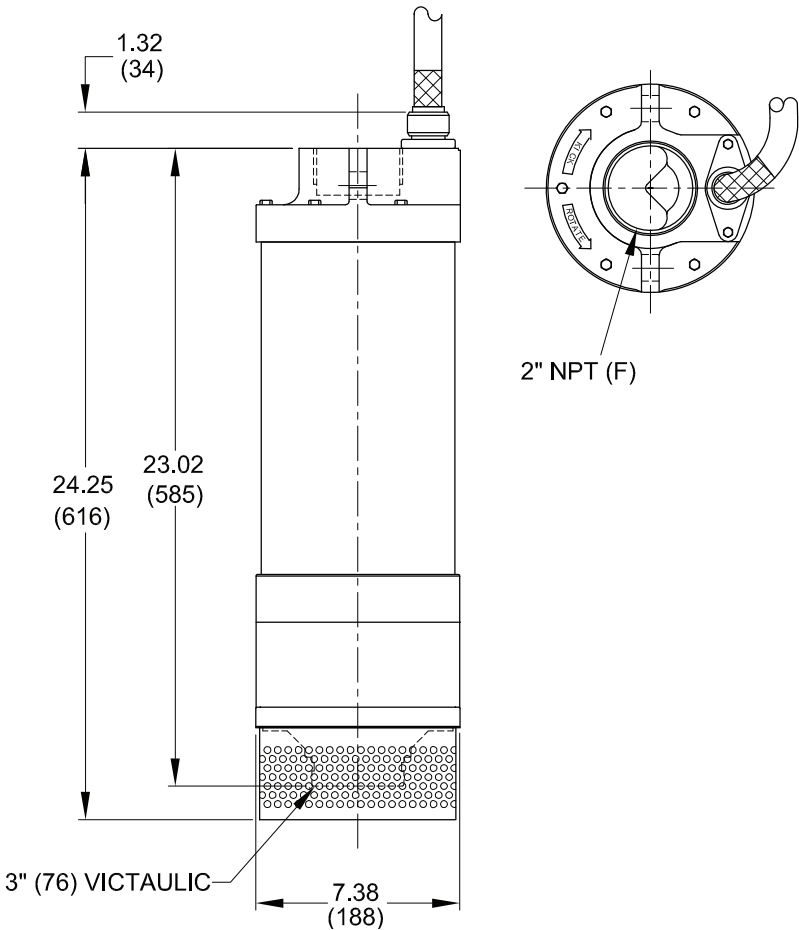
STANDARD-LINE®

Series: 9-55000, 2 Stage, High Head  
2" NPT Female Discharge

PROSSER®

www.cranepumps.com

Submersible Dewatering Pumps



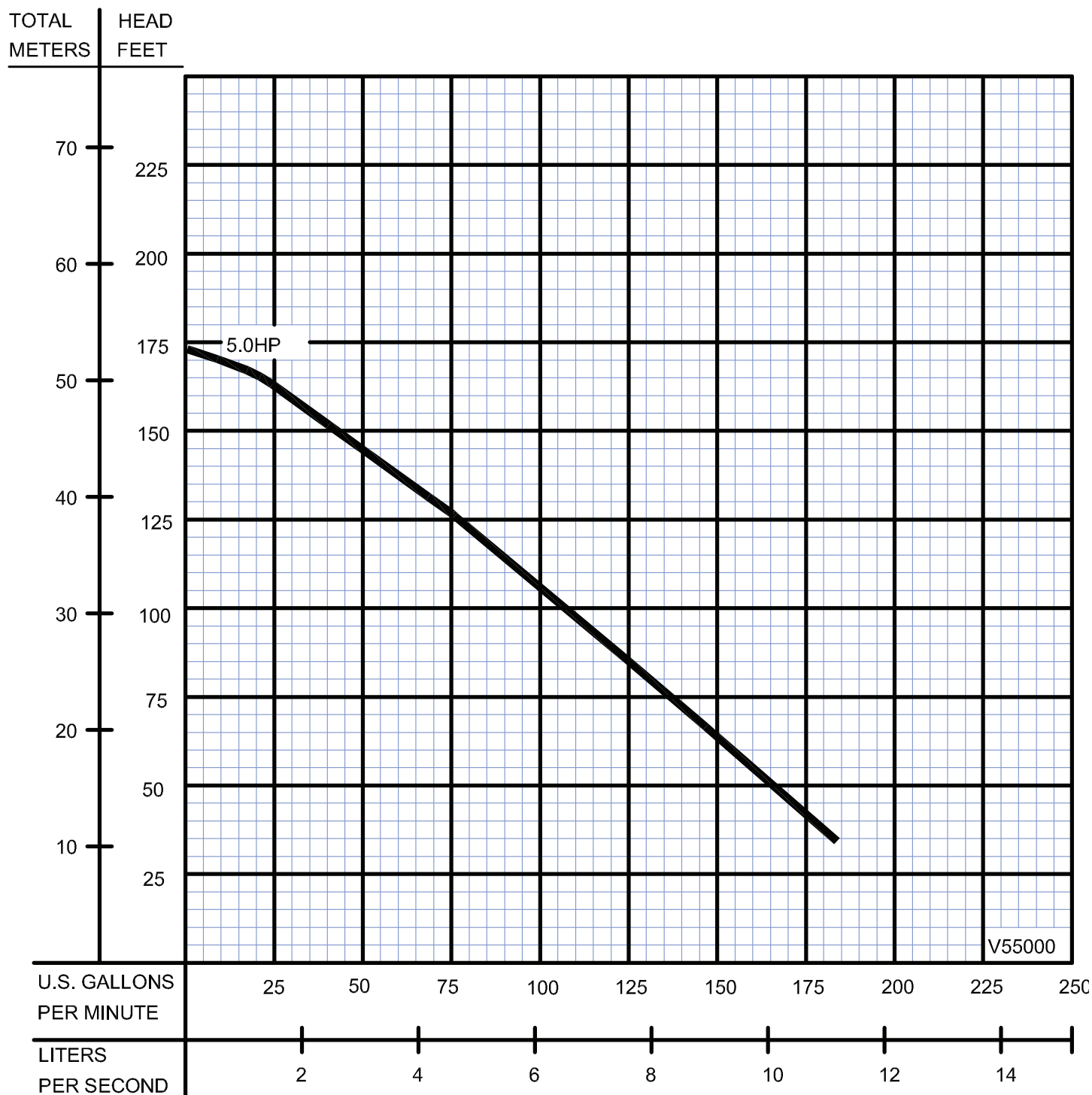
PART NO.	HP	VOLT/PH	Hz	RPM (Nom.)	NEMA START CODE	FULL LOAD AMPS	LOCKED ROTOR AMPS	CORD SIZE	CORD TYPE	MAX. CORD LENGTH
PUMP w/RAINPROOF CONTROL										
9-55132-03	5.0	230/3	60	3450	H	15.2	87.8	12/4	SOW	245Ft./75m
9-55134-03	5.0	460/3	60	3450	H	7.6	43.9	12/4	SOW	982Ft./299m
9-55135-03	5.0	575/3	60	3450	H	6.1	35.1	12/4	SOW	1392Ft./424m
PUMP w/OPTIONAL WATERTIGHT CONTROL										
9-55132-04	5.0	230/3	60	3450	H	15.2	87.8	12/4	SOW	245Ft./75m
9-55134-04	5.0	460/3	60	3450	H	7.6	43.9	12/4	SOW	982Ft./299m
9-55135-04	5.0	575/3	60	3450	H	6.1	35.1	12/4	SOW	1392Ft./424m

Pump rated for operation at ± 10% voltage at motor.

IMPORTANT !

- 1.) PUMP MAY BE OPERATED "DRY" FOR EXTENDED PERIODS WITHOUT DAMAGE TO MOTOR AND/OR SEALS.
- 2.) INSTALLATIONS SUCH AS DECORATIVE FOUNTAINS OR WATER FEATURES PROVIDED FOR VISUAL ENJOYMENT MUST BE INSTALLED IN ACCORDANCE WITH THE NATIONAL ELECTRIC CODE ANSI/NFPA 70 AND/OR THE AUTHORITY HAVING JURISDICTION. THIS PUMP IS NOT INTENDED FOR USE IN SWIMMING POOLS, RECREATIONAL WATER PARKS, OR INSTALLATIONS IN WHICH HUMAN CONTACT WITH PUMPED MEDIA IS A COMMON OCCURRENCE.

### Submersible Dewatering Pumps

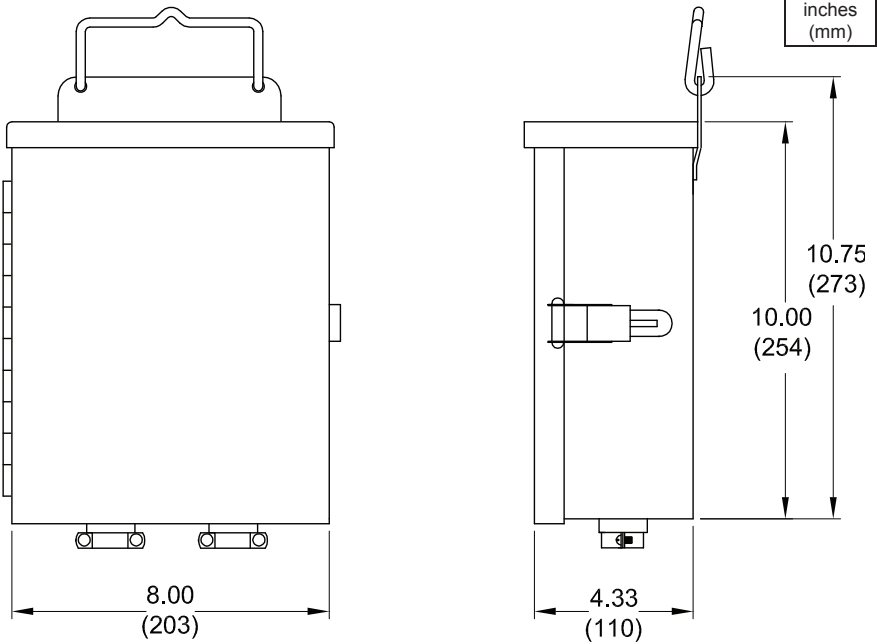


Testing is performed with water, specific gravity 1.0 @ 68° F @ (20°C), other fluids may vary performance

**Submersible Dewatering Pumps**

**CONTROL  
NEMA 3R, RAINPROOF**

<b>Pump P/N:</b>	<b>Control P/N</b>
9-55132-03	9-810834-03
9-55134-03	9-500834-03
9-55135-03	9-500835-03



**OPTIONAL - CONTROL  
NEMA 4, WATERTIGHT**

<b>Pump P/N:</b>	<b>Control P/N</b>
9-55132-04	9-810834-04
9-55134-04	9-500834-04
9-55135-04	9-500835-04

