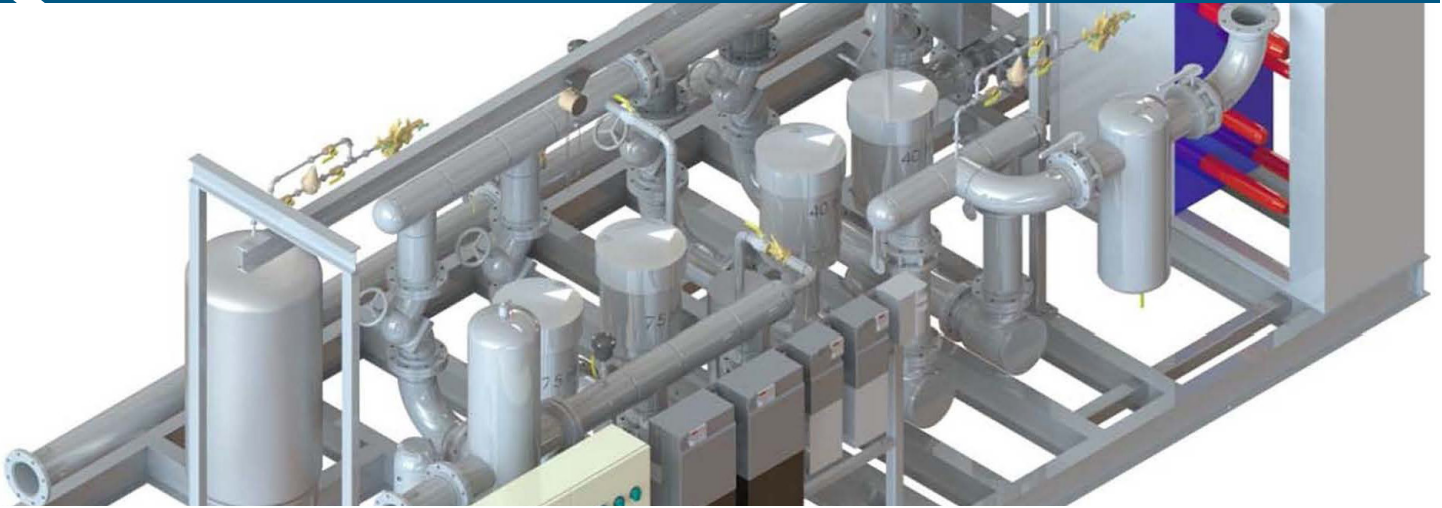


# HEAT TRANSFER SYSTEMS

## PLUMBING, HVAC & INDUSTRIAL APPLICATIONS



### FOR WHERE IT REALLY MATTERS

SyncroFlo is based in Norcross, GA with over 50 years of experience manufacturing packaged pumping systems and the first to prepackage pumping systems for boosting pressure in domestic water distribution systems. The "IronHeart," which has been the core of our business since 1985, has been the industry standard for pressure boosting domestic water in commercial buildings. With true single source responsibility SyncroFlo heat transfer systems are manufactured to the highest quality standards and in complete compliance with project drawings and specifications. With SyncroFlo you can be assured that you have a partner with the flexibility and expertise to evaluate every possibility for the best value. SyncroFlo can provide any services you may need in the design stage from pump selection, specification writing and conceptual drawings we are there to help.

### WHY A SYNCROFLO PRE PACKAGED SYSTEM?

All SyncroFlo systems are manufactured to the highest standards within the 155,000 square foot facility. SyncroFlo has a superior Quality Management System that is ISO 9001:2015 certified. All systems bear the UL labels and are certified to UL 778 and UL 508A standards. Many custom commercial systems also are certified to NSF/ANSI 61 & 372 standard to have the low lead certification for potable water. Control panels are assembled in a UL 508A panel shop with a

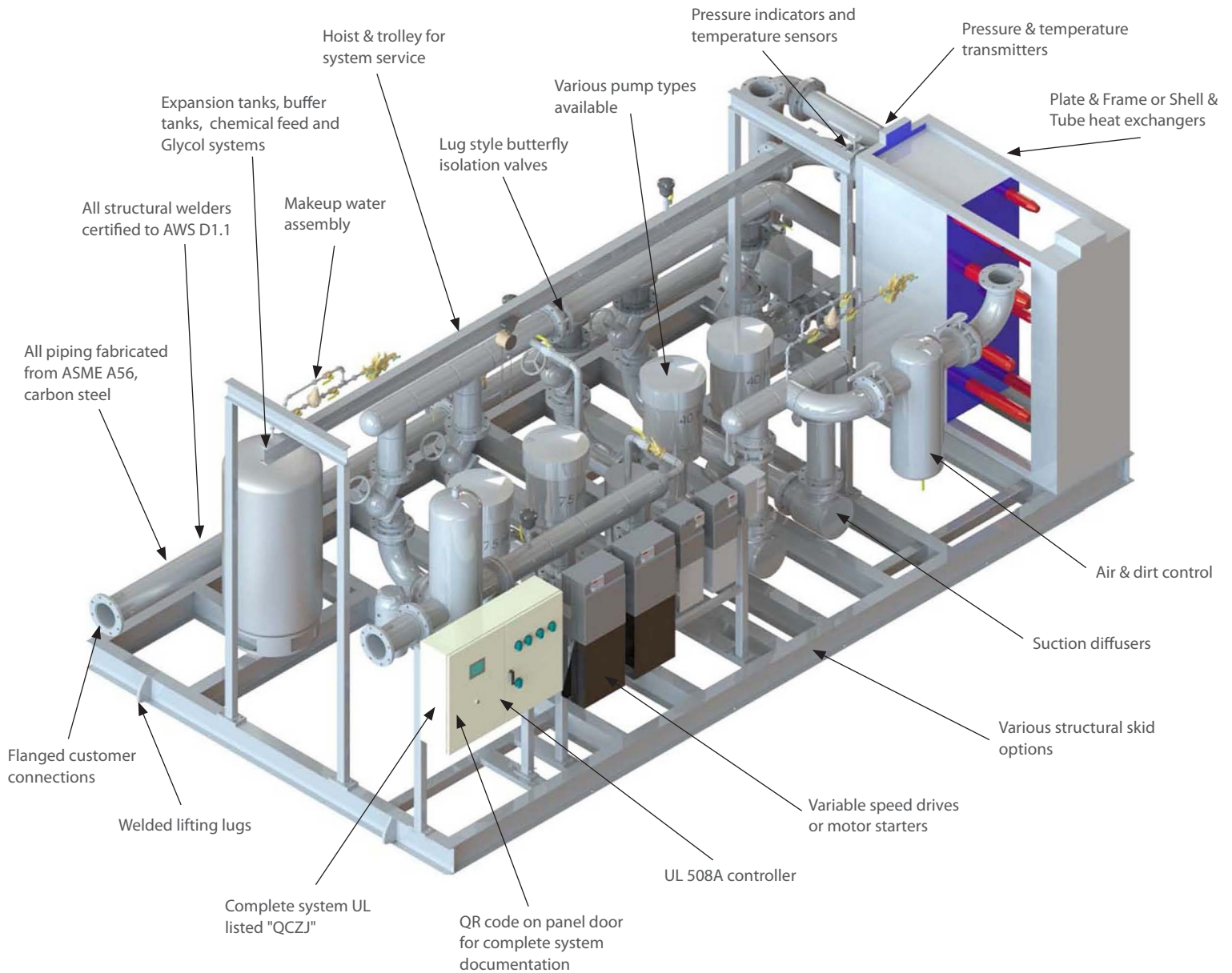
QR (Quick Reference) code identification for web based access to the project documents. All systems are factory tested in a NIST traceable test stand and the results are recorded for generation of an XY plot.

### QUALITY CONTROL AND TESTING!

SyncroFlo's quality control program is on the leading edge of technology for our industry. Each system is tracked at all stages of manufacturing, assembly, and testing with web based reporting via hand held devices. All welding is performed by AWS or ASME qualified welders. Once manufacturing and assembly are complete, the system is connected to our NIST calibrated test rig. We then hydrostatically test and flow test from zero to 100% of design and under specified suction and net delivery pressures. Once on site, your only surprise is how easy the system is to startup and commission.



## HEAT TRANSFER SYSTEMS



### PUMP TYPES

Close and flex coupled end suction, Vertical in-line, Vertical multistage and Horizontal split case

### PERFORMANCE

- 2" - 12" discharges
- Flow to 1500 + GPM
- Heads to 400 PSI