

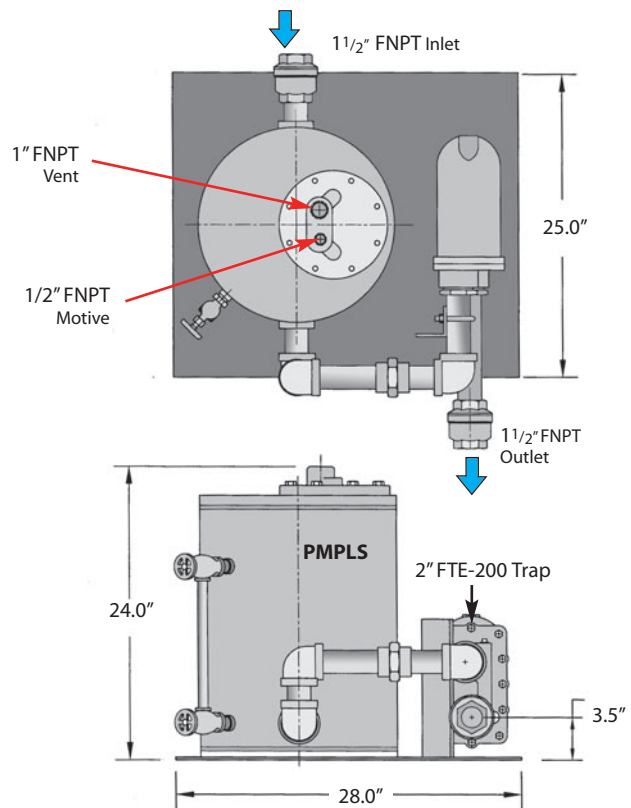


### WPT-Series Pump-Trap Combinations simplify Selection & Installation of Pressure Motive Pumps

- 3 size ranges available
- Up to 13,000 lbs/hr of condensate load

#### WPT3 • 1 1/2" x 1 1/2" Inlet x Outlet

(PMPLS with 2" FTE-200 Steam Trap)



### Typical Applications

**WPT Pump-Trap Combinations** are excellent for draining condensate from heat exchangers and other equipment whose steam pressure is modulated by a temperature regulator or a temperature control valve. In these applications the steam pressure in the heat exchanger may not be sufficient to overcome the back pressure in the condensate return line. When this condition occurs, the pressure powered pump takes over and uses high pressure steam supplied to the pump to discharge the condensate. When sufficient pressure does exist, the WPT functions like a standard steam trap.

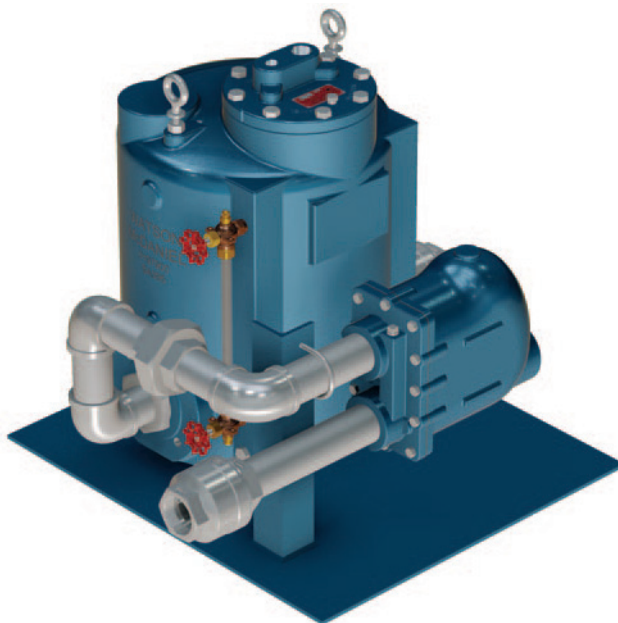
**Pump-Traps facilitate condensate discharge under all operating conditions, including vacuum.**

### Pump-Trap Features

- Pump and Steam Trap are pre-mounted together on a single base for easy installation
- Higher capacities than Pump-Trap combinations with internal steam traps (PMPT)
- Engineering and selection is simplified using a pre-mounted system

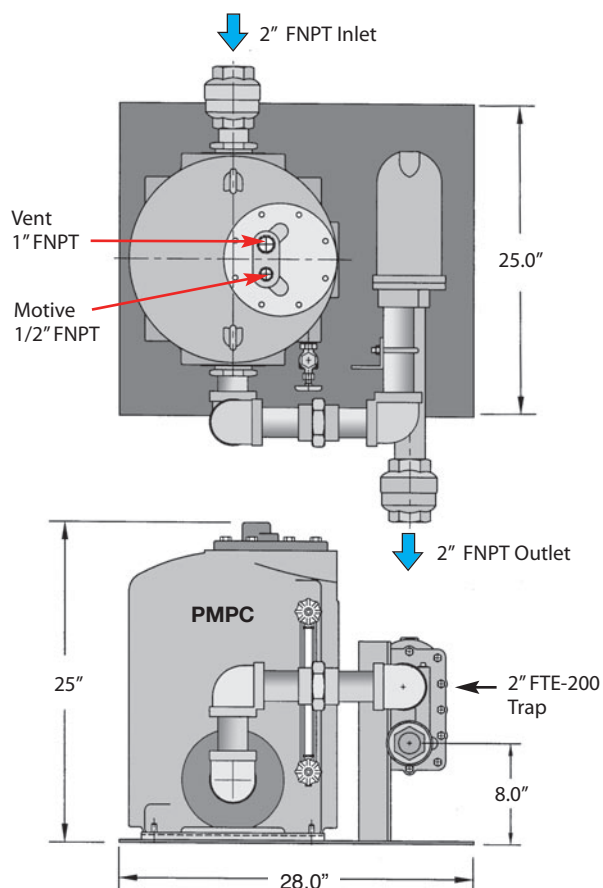
**NOTE: Reservoir** - Pump-Trap Combination may require a reservoir above the pump to collect condensate generated in the heat exchanger during the discharge cycle of the pump. Consult Reservoir Sizing Guidelines or contact factory for additional information.

MATERIALS	WPT3		WPT4		WPT5	
	Pump	Trap	Pump	Trap	Pump	Trap
Body	Carbon Steel	Ductile Iron SA-395	Ductile Iron SA-395	Ductile Iron SA-395	Ductile Iron SA-395	Ductile Iron SA-395
Cover	Carbon Steel	Ductile Iron SA-395	Ductile Iron SA-395	Ductile Iron SA-395	Ductile Iron SA-395	Ductile Iron SA-395
Cover Gasket	Garlock	Garlock	Garlock	Garlock	Garlock	Garlock
Cover Bolts	Steel	Steel	Steel	Steel	Steel	Steel
Inlet Valve	17-4 Ph SS 40 Rc	n/a	17-4 Ph SS 40 Rc	n/a	17-4 Ph SS 40 Rc	n/a
Vent Valve	17-4 Ph SS 40 Rc	n/a	17-4 Ph SS 40 Rc	n/a	17-4 Ph SS 40 Rc	n/a
Ball Float	304 SS	304 SS	304 SS	304 SS	304 SS	304 SS
Check Valves	316 SS	n/a	316 SS	n/a	316 SS	n/a
Springs	Inconel-X-750	n/a	Inconel-X-750	n/a	Inconel-X-750	n/a
Other Internal Components	Stainless Steel	Stainless Steel	Stainless Steel	Stainless Steel	Stainless Steel	Stainless Steel



## WPT4 • 2" x 2" Inlet x Outlet

(PMPC with 2" FTE-200 Steam Trap)



## WPT5 • 3" x 2" Inlet x Outlet

(PMPC with 2 1/2" FTE-200 Steam Trap)

