



# STEALTH SERIES BOILER FEED SYSTEMS

EXCEPTIONAL VALUE | EXTRAORDINARY QUALITY



## STANDARD FEATURES

- 30-200 Gallon Stainless Steel Receiver with 20 year warranty against failure due to corrosion
- Vertical Flange Mounted Stainless Steel Centrifugal Pumps
- Mechanical make-up

## FABTEK STEALTH SERIES

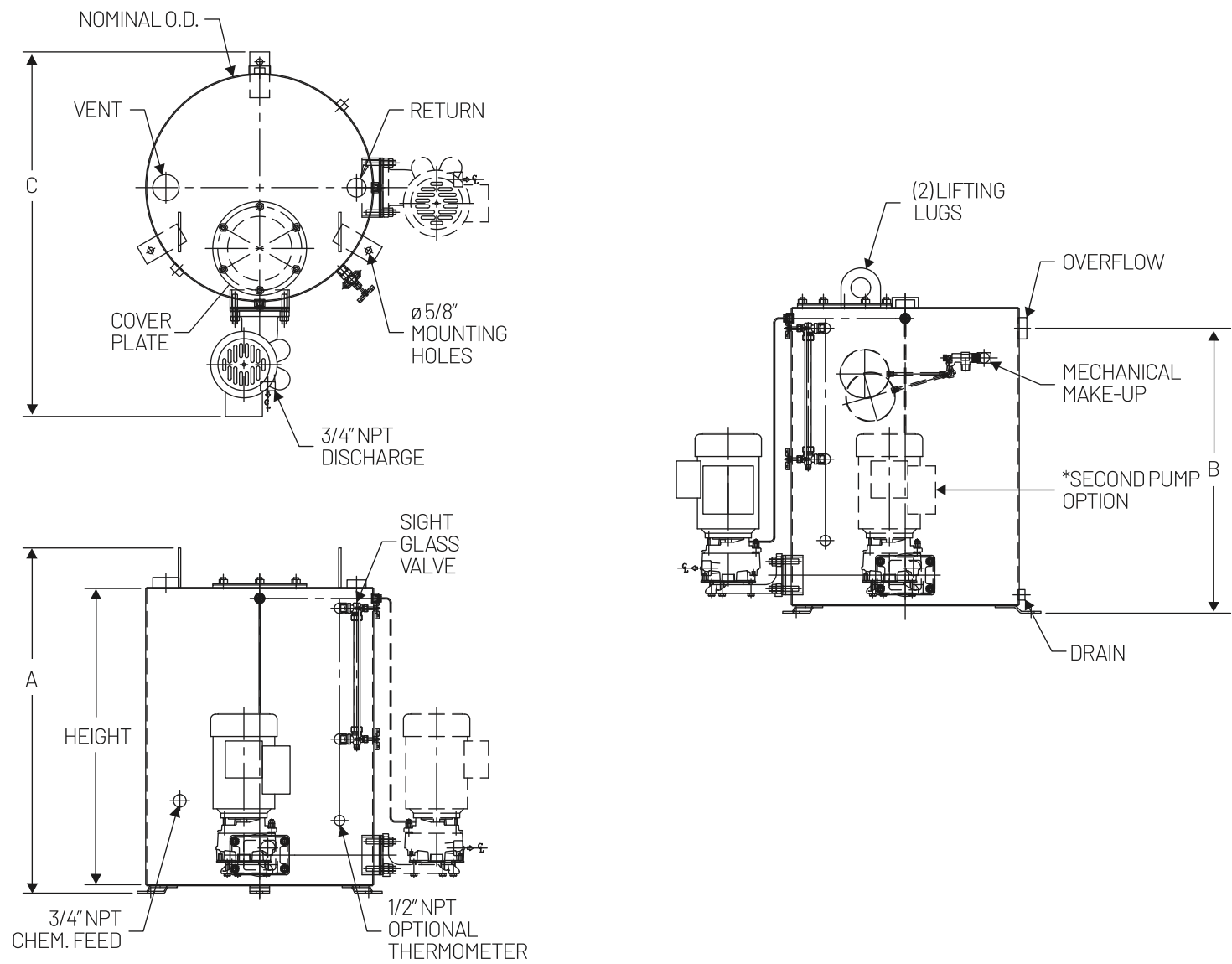
- Basic systems that get the job done
- Range of standard size receivers
- Available in vertical and horizontal configurations

# FABTEK

775 Duvick Ave. Sandwich, IL  
Phone: 630.552.3622 Fax: 630.552.8220

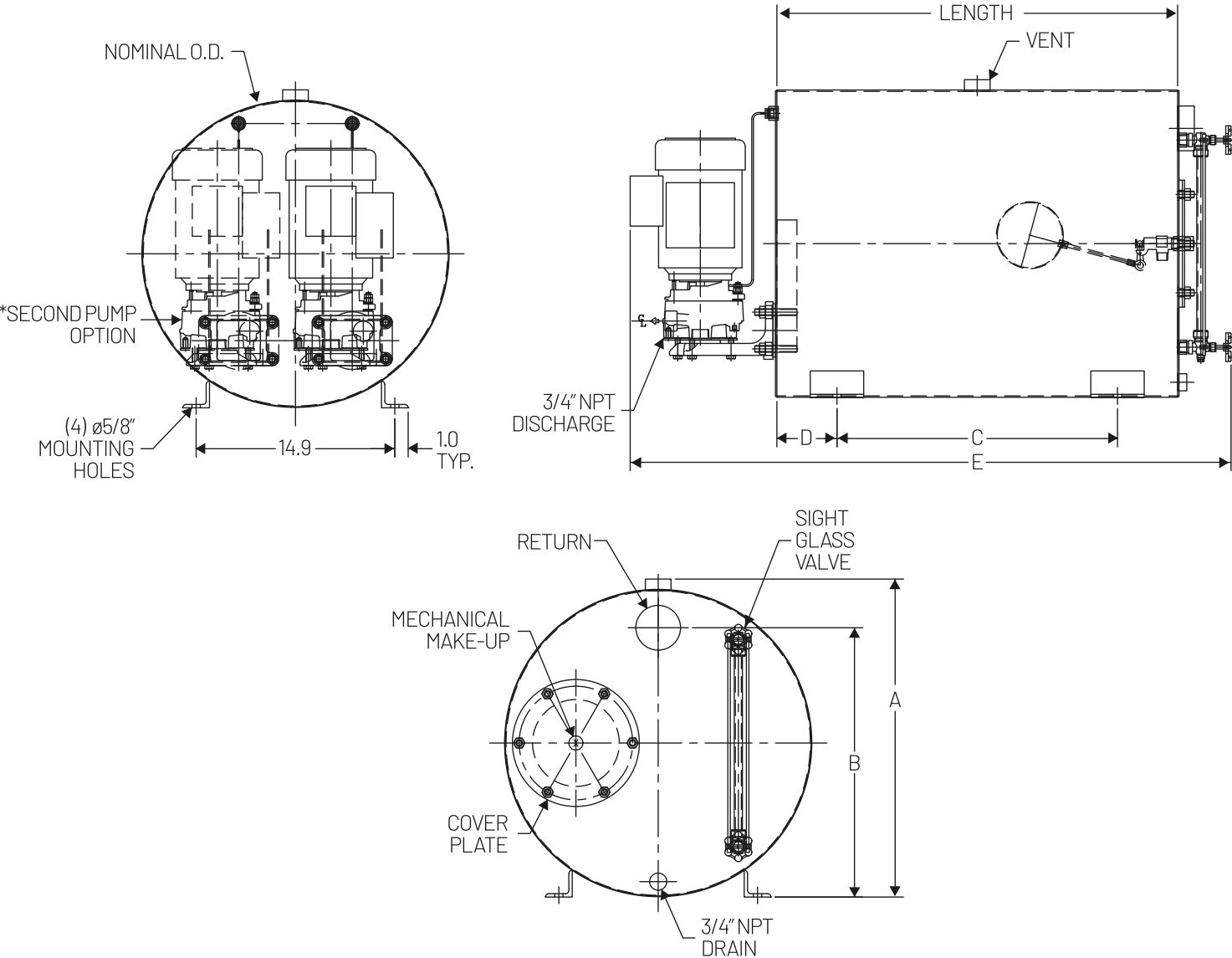
[www.fabtekaero.com](http://www.fabtekaero.com)

MODEL: 30 GAL. - 200 GAL.  
VERTICAL FLOOR MOUNT BFS  
SIMPLEX/DUPLEX VERTICAL FLANGE  
MOUNTED PUMPS CENTRIFUGAL



DIMENSIONS											
GALLONS	NOMINAL O.D.	HEIGHT	MAKE-UP INLET	VENT	RETURN	DRAIN	OVERFLOW	#OF MOUNTING HOLES	A	B	C
30	$\phi 19"$	24"	1/2" NPT	2" NPT	1-1/4" NPT	1/2" NPT	1-1/2" NPT	3	29"	22.9	32.1/4"
50	$\phi 23"$	30"	1/2" NPT	2" NPT	1-1/4" NPT	1/2" NPT	1-1/2" NPT	3	35"	28.9	37"
100	$\phi 30"$	36"	3/4" NPT	2" NPT	2" NPT	1" NPT	2" NPT	3	41"	34.9	50-3/16"
200	$\phi 36"$	48"	3/4" NPT	2" NPT	2" NPT	1" NPT	2" NPT	4	54"	47.6	51"

**MODEL: 54 GAL. - 127 GAL.**  
**LOWBOY BFS**  
**SIMPLEX/DUPLEX VERTICAL FLANGE**  
**MOUNTED PUMPS CENTRIFUGAL**



DIMENSIONS										
GALLONS	NOMINAL O.D.	HEIGHT	MAKE-UP INLET	VENT	RETURN	A	B	C	D	E
54	ø23"	30"	1/2" NPT	1-1/4" NPT	2-1/2" NPT	23.8	20.2	21"	4.5	45"
65	ø23"	36"	1/2" NPT	1-1/2" NPT	3" NPT	23.8	20.2	21"	7.5	51"
127	ø25"	60"	3/4" NPT	2" NPT	4" NPT	26.1	26.1	30"	15"	75"

# STAINLESS STEEL CENTRIFUGAL PUMPS

1 PHASE TRI-VOLTAGE TEFC MOTORS

FROM 1/3HP – 2HP

MODEL	DISCH.	PUMP SIZE	
		IMP.Ø	OP
C4AB	1/2	4	8
C4BC	3/4	4	8 3/16
C4CD	1	4	8 3/16
C4DE	1 1/4	4	8 3/8
C4EF	1 1/2	4	8 3/8
C5AB	1/2	5	8 3/8
C5BC	3/4	5	8 1/2
C5CD	1	5	8 1/2
C5DE	1 1/4	5	8 5/8
C6AB	1/2	6	9 3/16
C6BC	3/4	6	9 3/8



Note: OP Dimension will be 3" longer when optional isolation valve is added

## FABTEK'S HISTORY

THE BEGINNING OF OUR BOILER SYSTEMS

Our company can trace its origins back to WWII. In the early 1940s, AERO Welding was founded in Aurora, IL in response to the war effort. They fabricated metal components for the Army Air Corps, which later became the US Air Force. After the war, AERO Welding hired returning soldiers as welders and fabricators as it transitioned into a more traditional metal fabrication business. Years later, the company was renamed Fabtek and continued to fabricate metal goods.

In 2002, we introduced our first line of stainless steel boiler products. The boiler industry had traditionally used carbon steel tanks and cast-iron pumps on their boiler systems. Often, they only last a few years due to the challenging operating conditions and corrosive nature of steam condensate from chemically treated and untreated feed water. By employing stainless steel construction, we can offer systems that last for many years more than the carbon steel systems provided by our competitors, all at a minimal expense.

